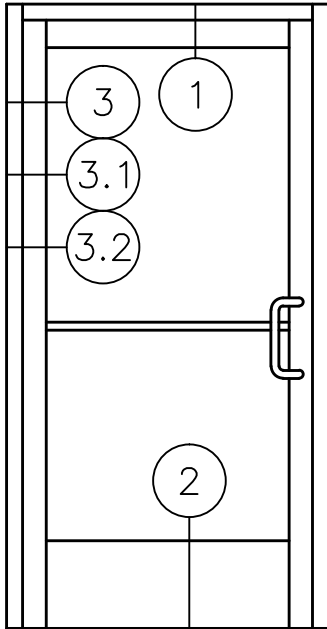


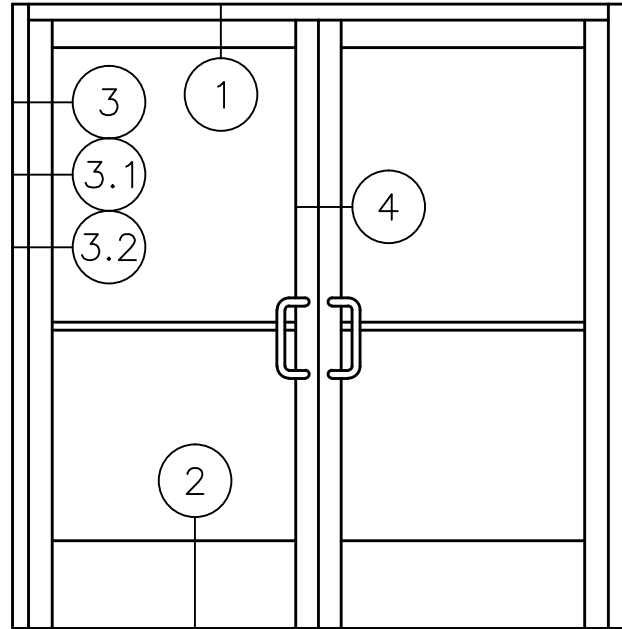


**2450CG
XPT**

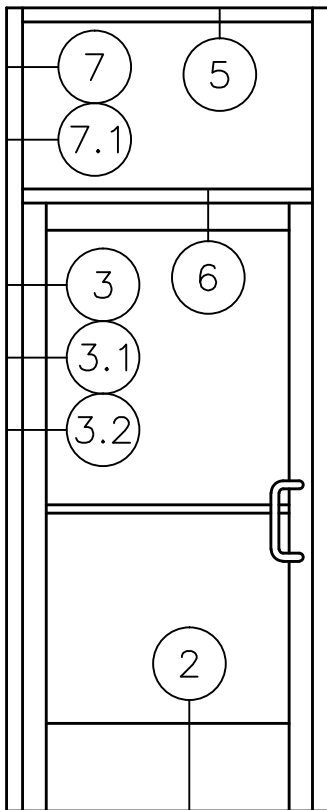
**2" X 4 1/2" DOUBLE THERMALLY
BROKEN STOREFRONT DOOR FRAME
WITH 100 SERIES (NARROW STILE)
DOOR STANDARD DETAILS**



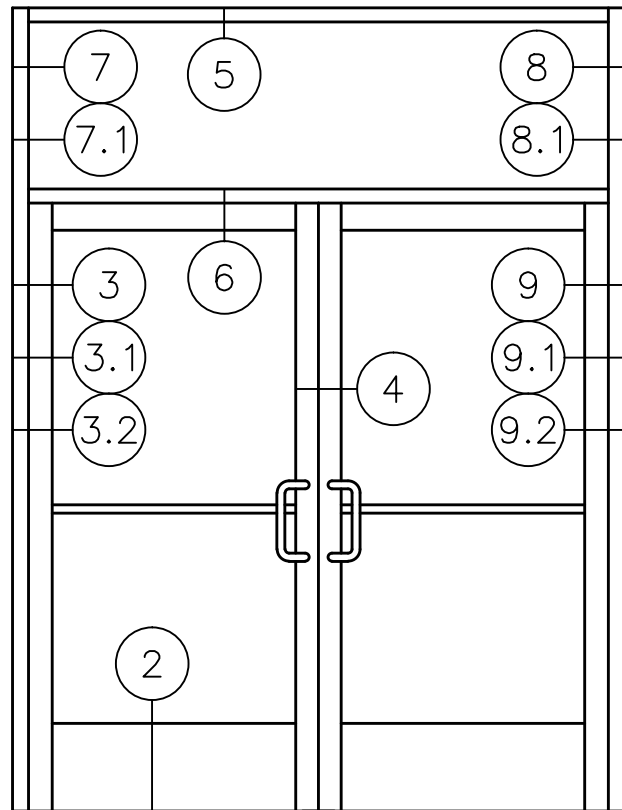
SINGLE DOOR
WITHOUT TRANSOM
STANDARD CONFIGURATION



PAIR DOORS
WITHOUT TRANSOM
STANDARD CONFIGURATION



SINGLE DOOR
WITH TRANSOM
STANDARD CONFIGURATION



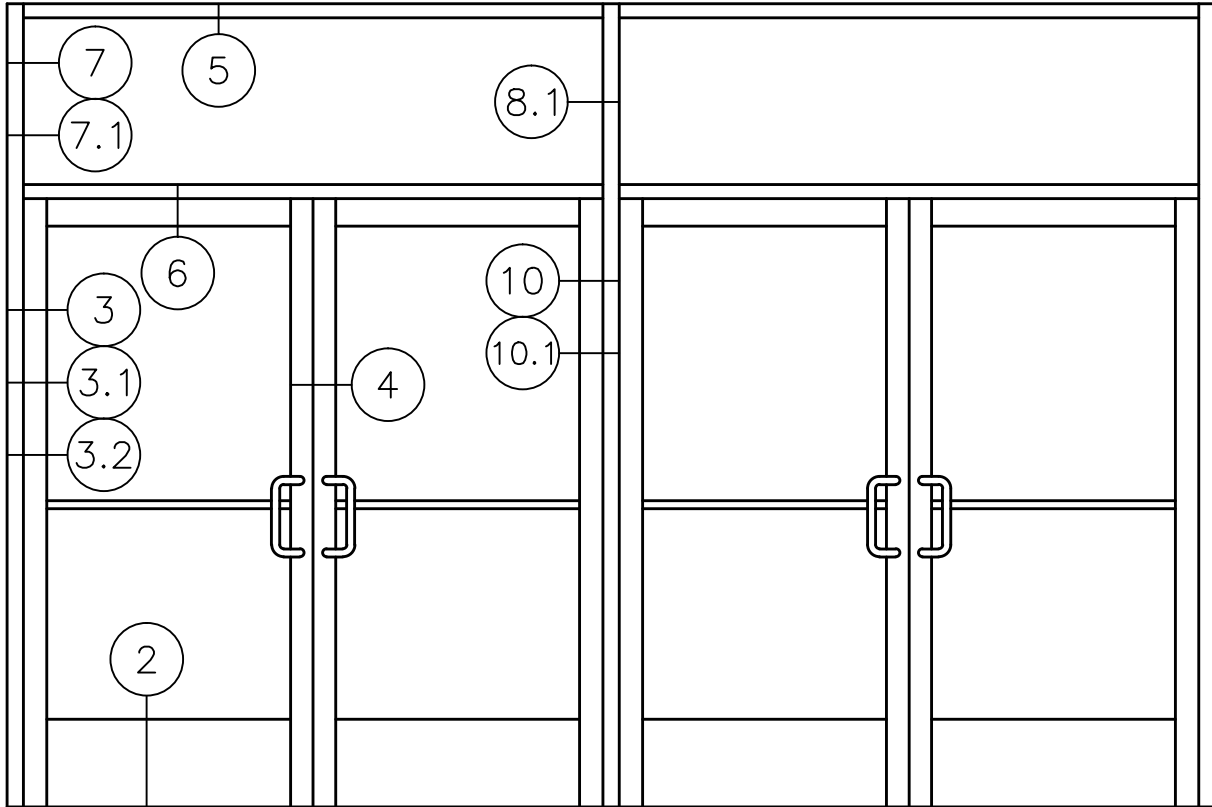
PAIR DOORS
WITH TRANSOM
STANDARD CONFIGURATION



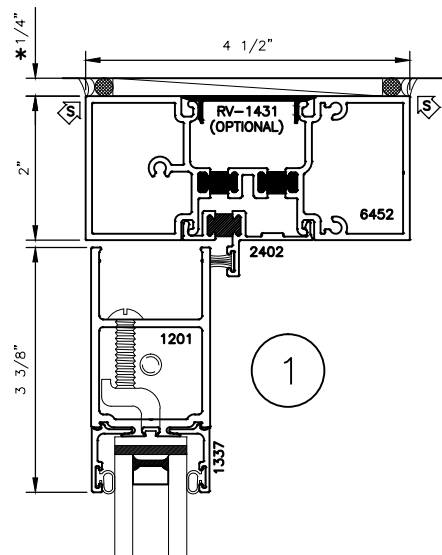
**2450CG
XPT**

**2" X 4 1/2" DOUBLE THERMALLY
BROKEN STOREFRONT DOOR FRAME
WITH 100 SERIES (NARROW STILE)
DOOR STANDARD DETAILS**

* MINIMUM RECOMMENDED FOR THERMAL ISOLATION.
INCREASE AS REQUIRED TO COMPLY WITH SEALANT
MANUFACTURERS' INSTRUCTIONS



MULTIPLE PAIR DOORS MULLED TOGETHER
WITH TRANSOM STANDARD CONFIGURATION

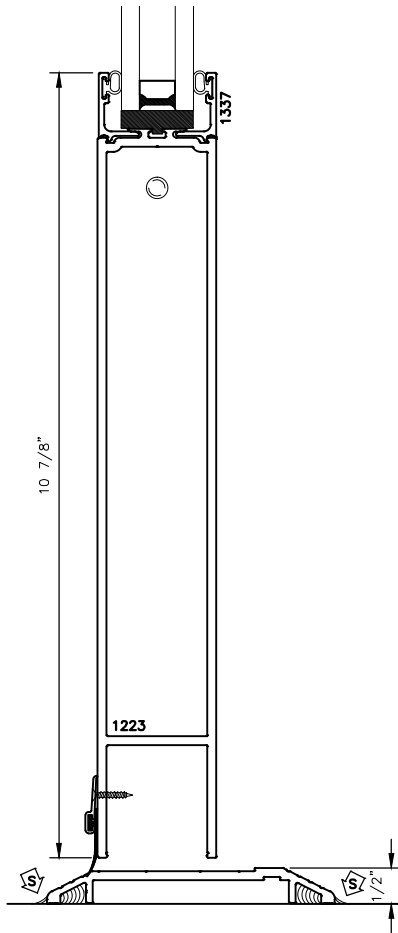




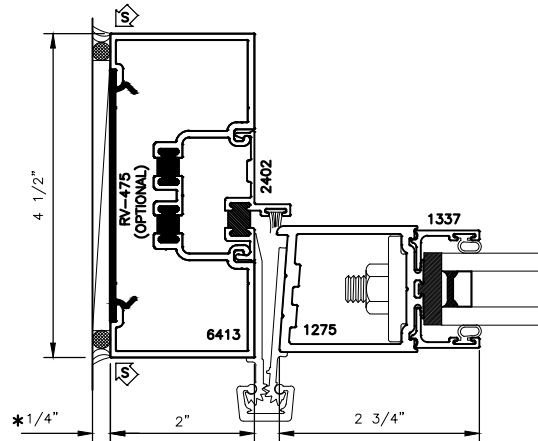
2450CG
XPT

2" X 4 1/2" DOUBLE THERMALLY
BROKEN STOREFRONT DOOR FRAME
WITH 100 SERIES (NARROW STILE)
DOOR STANDARD DETAILS

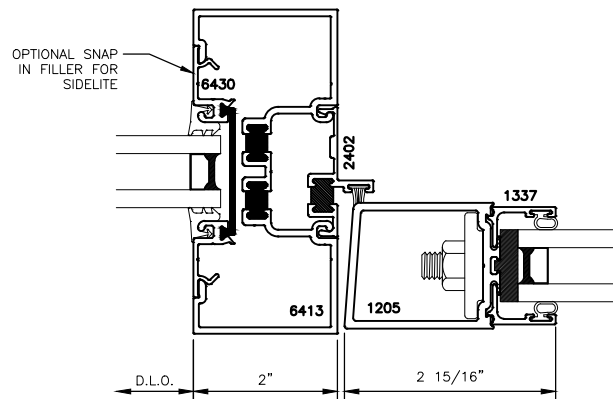
MINIMUM RECOMMENDED FOR THERMAL ISOLATION.
INCREASE AS REQUIRED TO COMPLY WITH SEALANT
MANUFACTURERS' INSTRUCTIONS



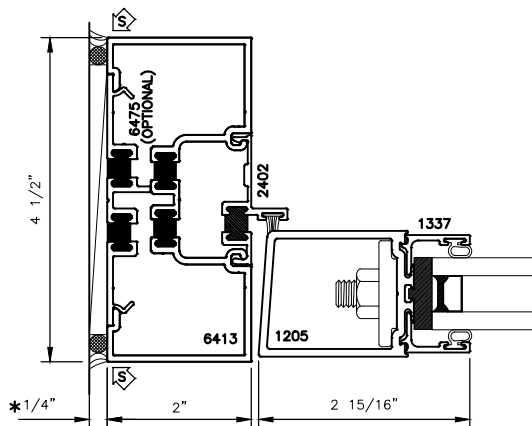
2



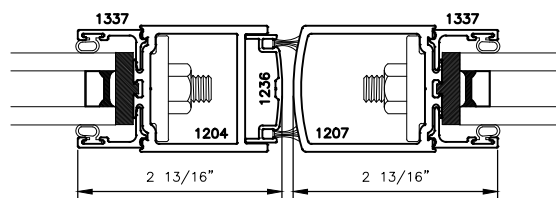
OPT.
3.1



OPT.
3.2



3



4

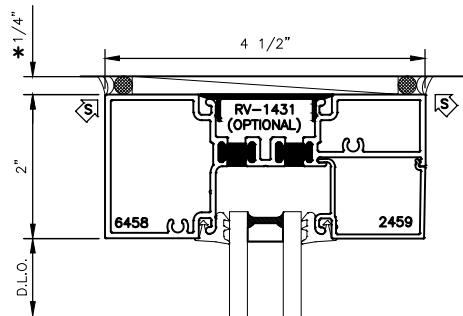
STANDARD SWEEP AND THRESHOLD SHOWN



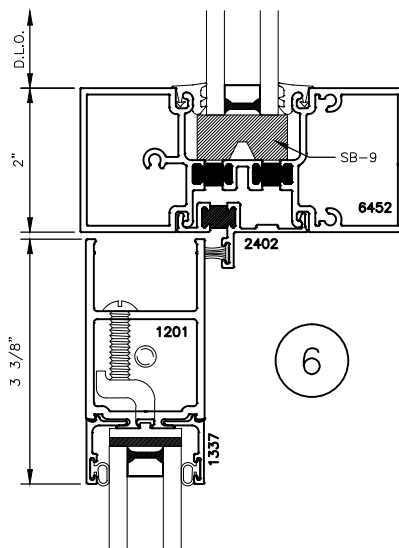
2450CG XPT

2" X 4 1/2" DOUBLE THERMALLY BROKEN STOREFRONT DOOR FRAME WITH 100 SERIES (NARROW STILE) DOOR STANDARD DETAILS

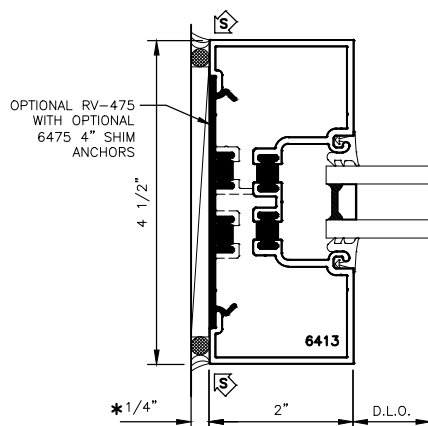
* MINIMUM RECOMMENDED FOR THERMAL ISOLATION.
INCREASE AS REQUIRED TO COMPLY WITH SEALANT
MANUFACTURERS' INSTRUCTIONS



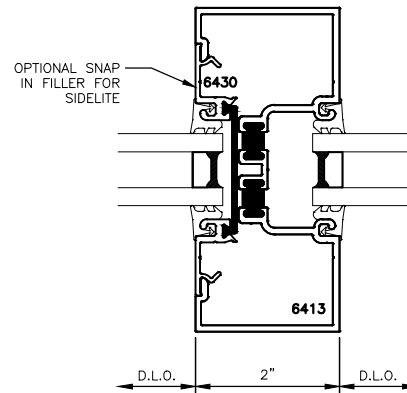
5



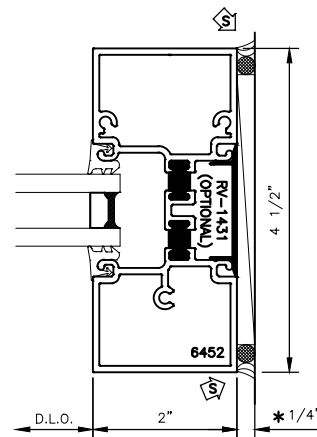
6



7



OPT.
7.1



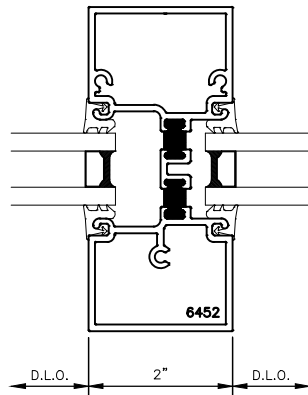
8



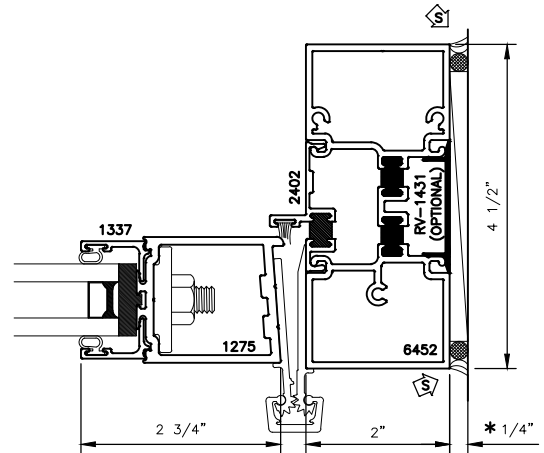
**2450CG
XPT**

**2" X 4 1/2" DOUBLE THERMALLY
BROKEN STOREFRONT DOOR FRAME
WITH 100 SERIES (NARROW STILE)
DOOR STANDARD DETAILS**

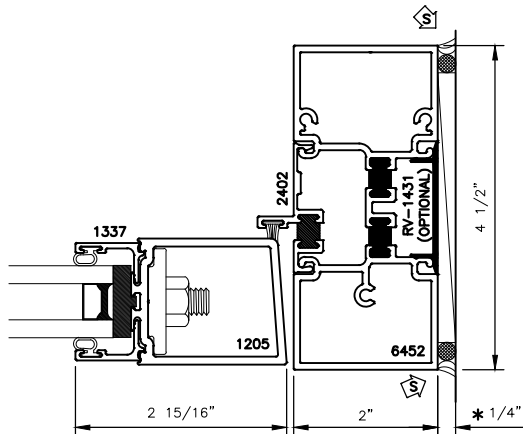
* MINIMUM RECOMMENDED FOR THERMAL ISOLATION.
INCREASE AS REQUIRED TO COMPLY WITH SEALANT
MANUFACTURERS' INSTRUCTIONS



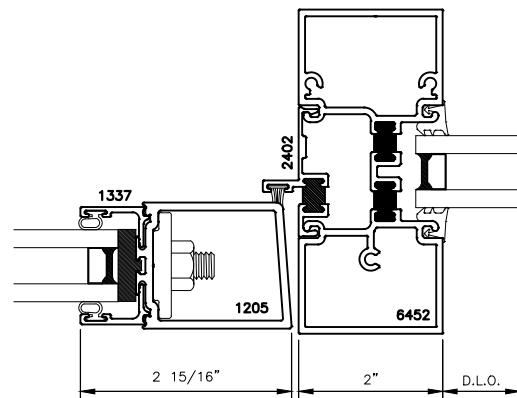
OPT.
8.1



OPT.
9.1



9



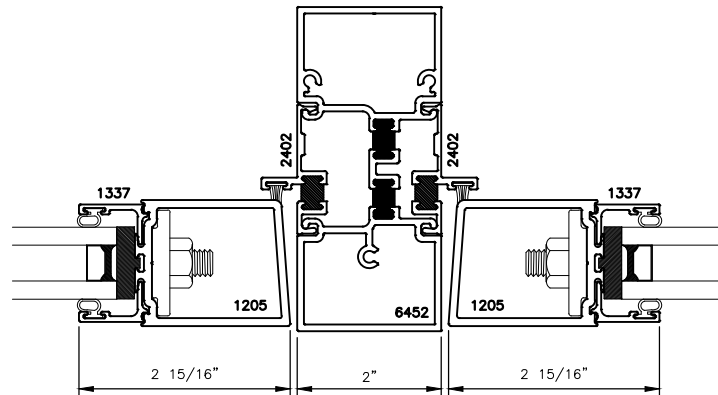
OPT.
9.2



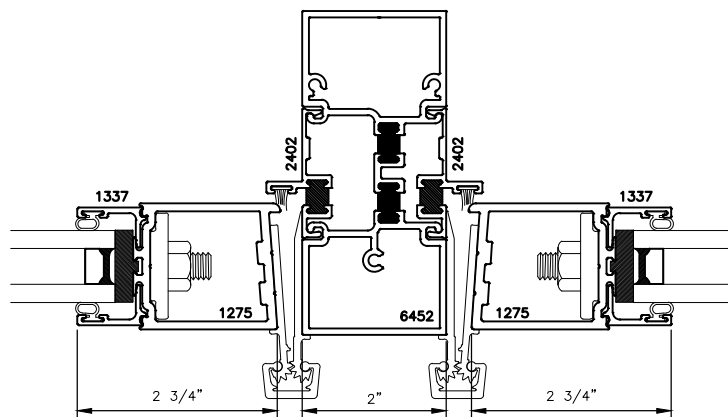
2450CG
XPT

2" X 4 1/2" DOUBLE THERMALLY
BROKEN STOREFRONT DOOR FRAME
WITH 100 SERIES (NARROW STILE)
DOOR STANDARD DETAILS

* MINIMUM RECOMMENDED FOR THERMAL ISOLATION.
INCREASE AS REQUIRED TO COMPLY WITH SEALANT
MANUFACTURERS' INSTRUCTIONS



10



OPT.

10.1