



MANKO

WINDOW SYSTEMS INC.

2450 Series Accessory Details

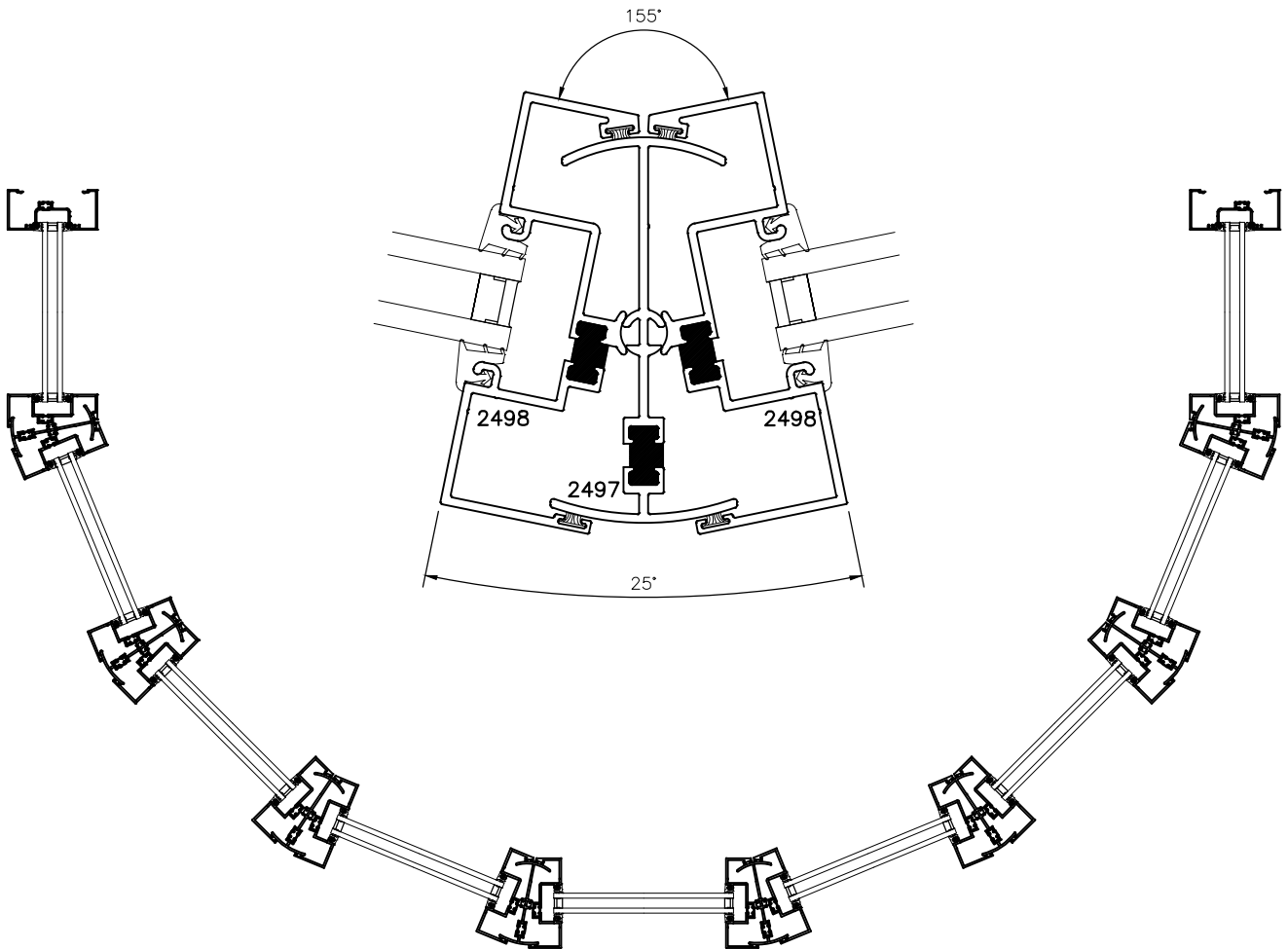
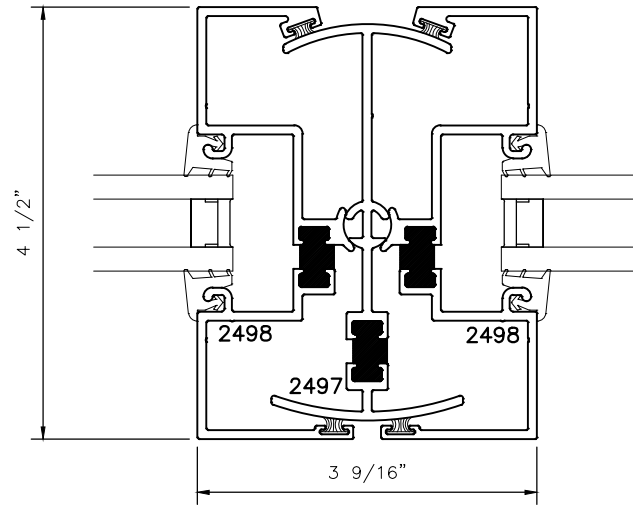
Table of Contents

Adjustable Mullion.....	1
Glazing Options.....	2
Grids & Profiles.....	3-4
Inside Glaze.....	5
Receptors.....	6
Sub-Sills.....	7
True Divided Lite Assembly.....	8



2450CG

4 1/2" CENTER GLAZED THERMALLY
BROKEN STOREFRONT
ADJUSTABLE MULLION DETAIL



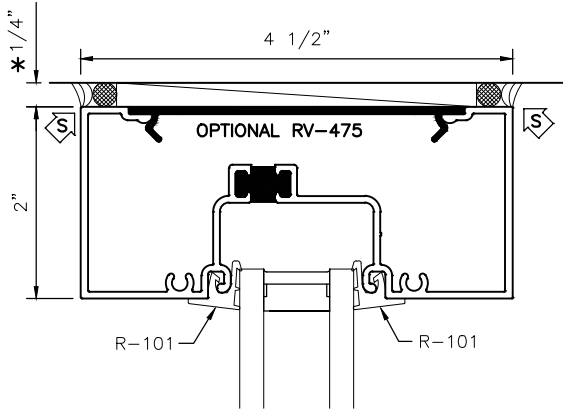


MANKO

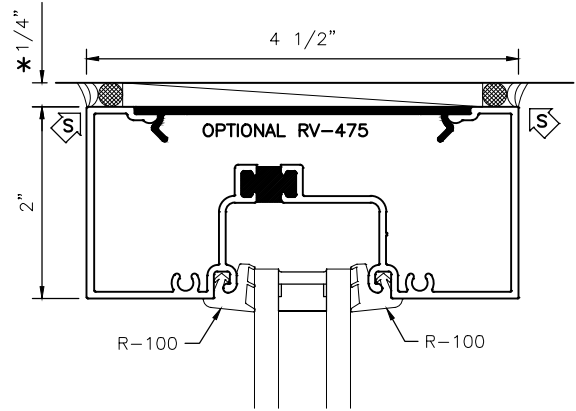
2450CG

4 1/2" CENTER GLAZED THERMALLY BROKEN STOREFRONT OPT. GLAZING CONFIGURATION

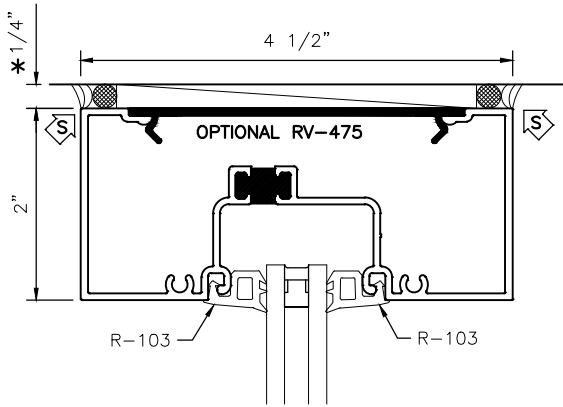
* MINIMUM RECOMMENDED FOR THERMAL ISOLATION.
INCREASE AS REQUIRED TO COMPLY WITH SEALANT
MANUFACTURERS' INSTRUCTIONS



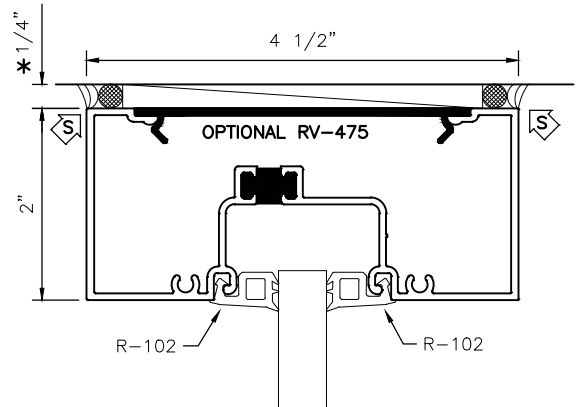
1 1/8" GLAZING



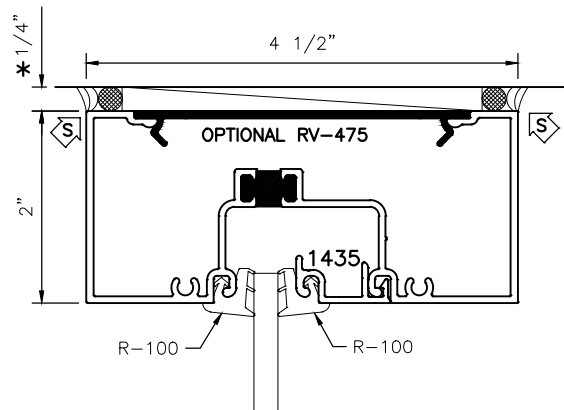
1" GLAZING



5/8" GLAZING



1/2" GLAZING



1/4" GLAZING

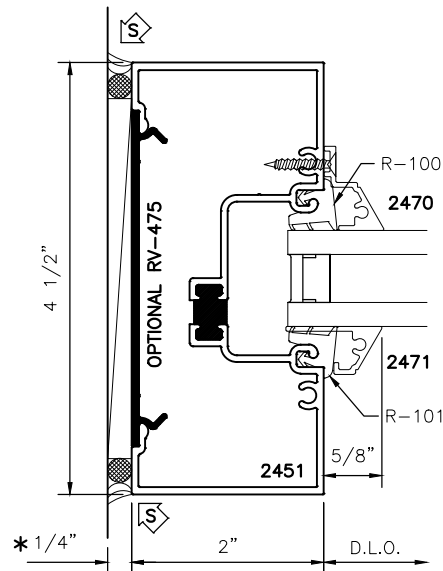
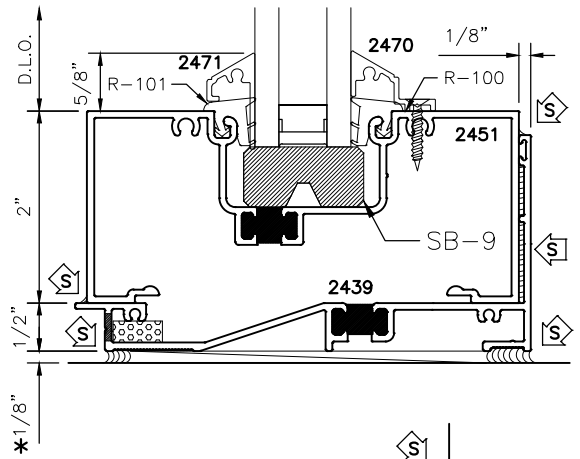
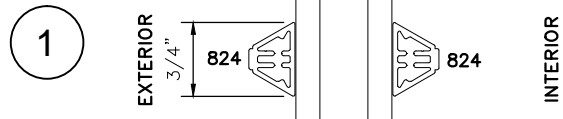
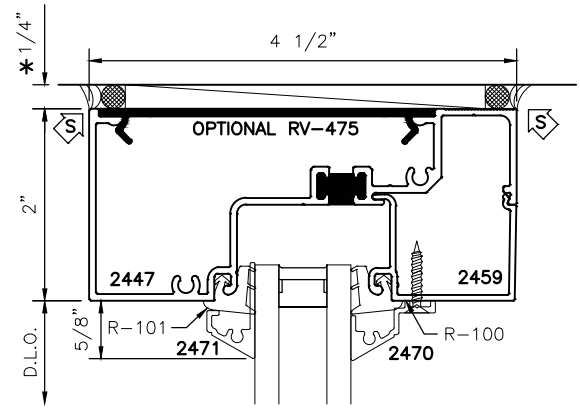
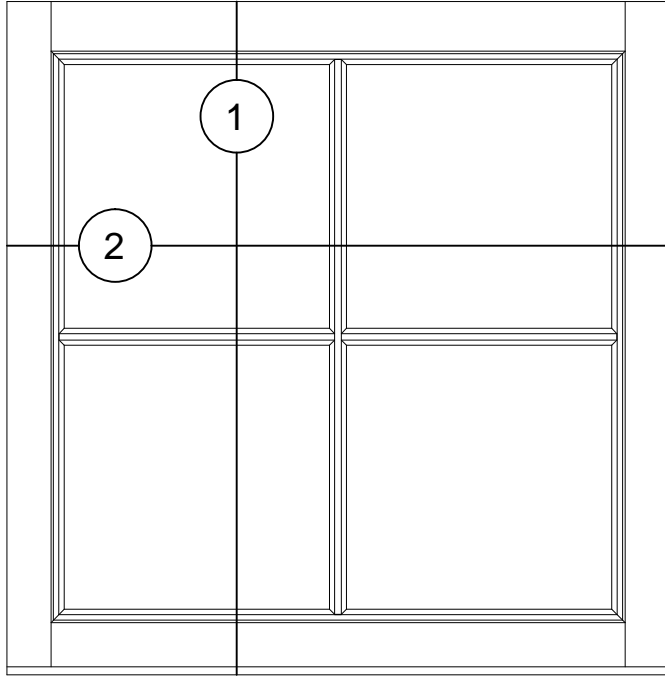
**PART # 2451 SHOWN. SIMILAR
THROUGHOUT SERIES.**



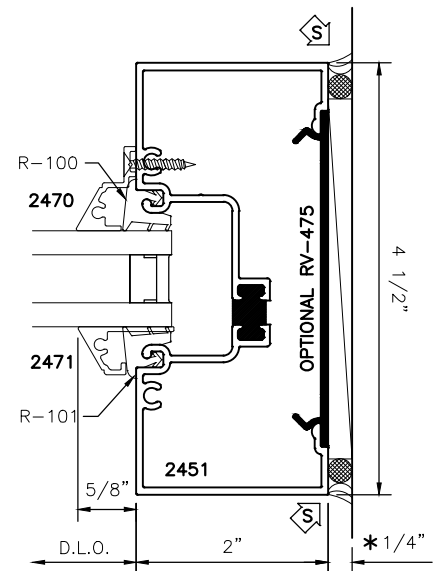
MANKO

2" X 4 1/2" CENTER GLAZED 2450CG THERMALLY BROKEN STOREFRONT GRID OPTION DETAILS

* MINIMUM RECOMMENDED FOR THERMAL ISOLATION.
INCREASE AS REQUIRED TO COMPLY WITH SEALANT
MANUFACTURERS' INSTRUCTIONS



2

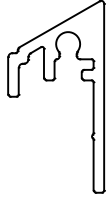




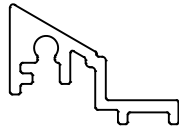
GRID PROFILES

Storefront & Curtain Wall

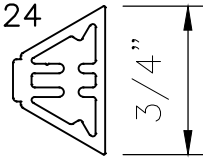
2471



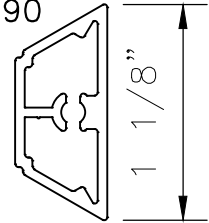
2470



824



890

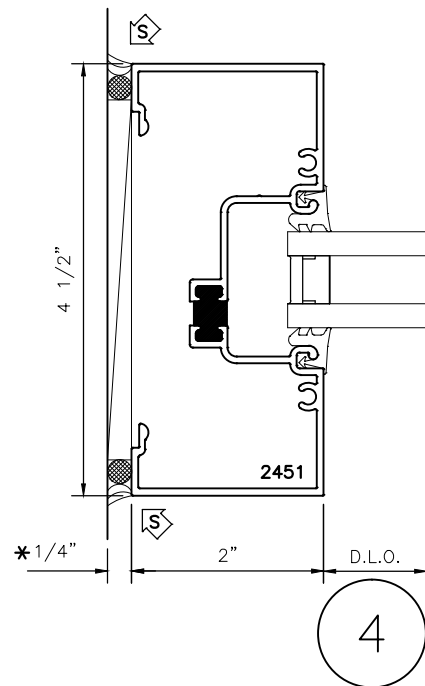
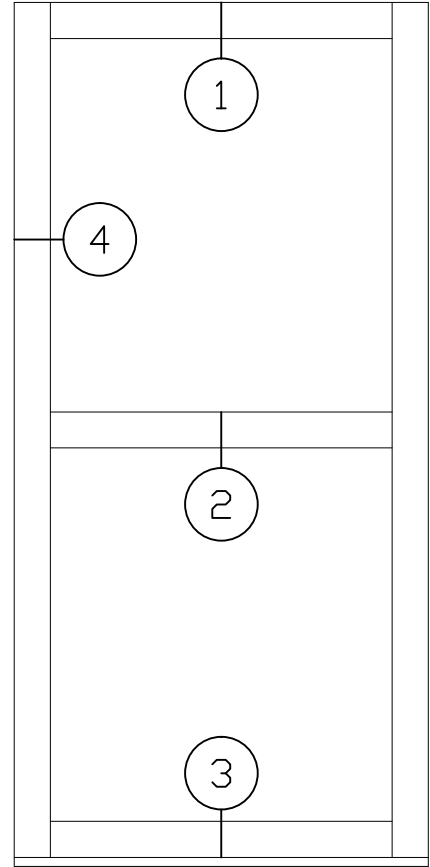
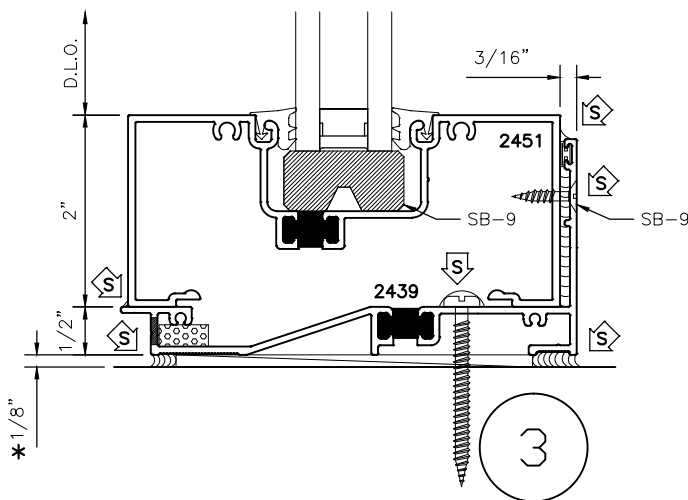
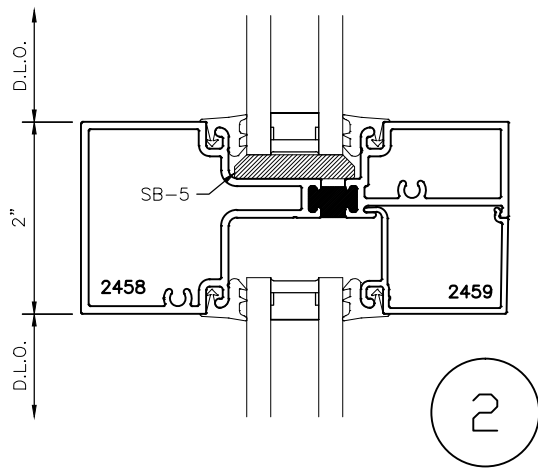
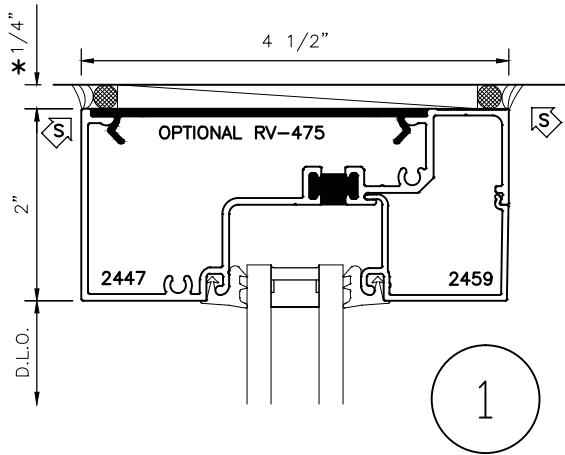




MANKO

2" X 4 1/2" CENTER GLAZED 2450CG THERMALLY BROKEN STOREFRONT INSIDE GLAZE DETAILS

* MINIMUM RECOMMENDED FOR THERMAL ISOLATION.
INCREASE AS REQUIRED TO COMPLY WITH SEALANT
MANUFACTURERS' INSTRUCTIONS



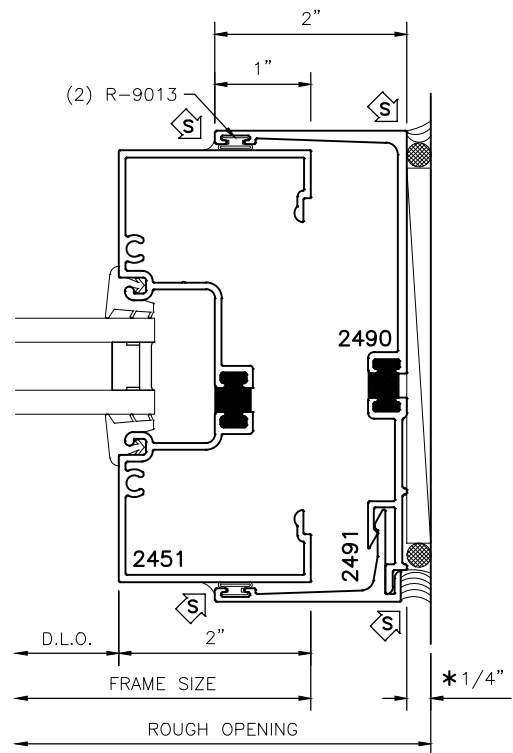
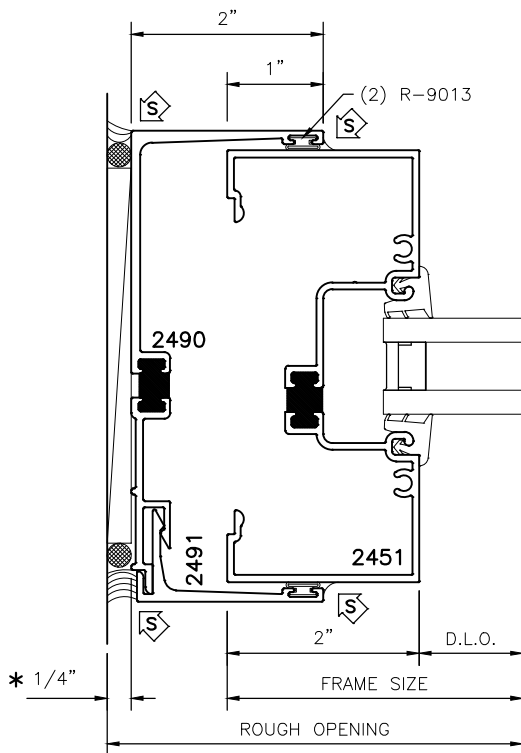
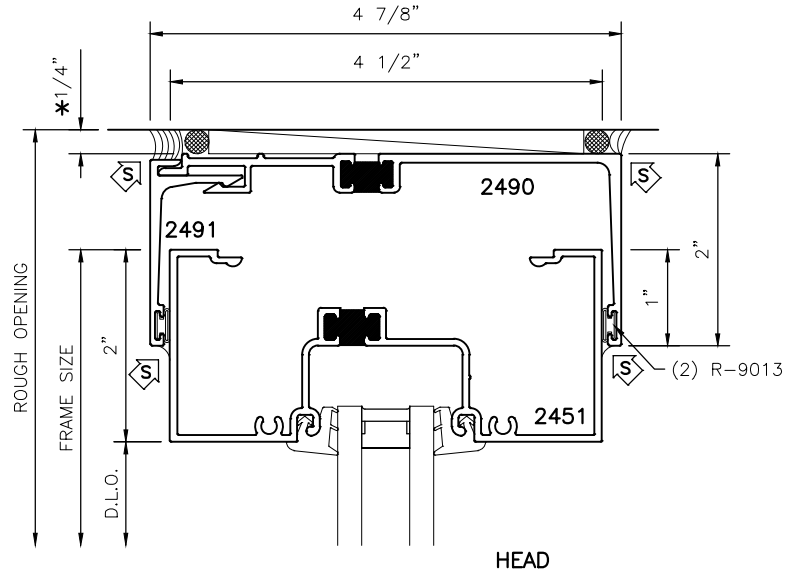


MANKO

2450CG

4 1/2" CENTER GLAZED THERMALLY BROKEN STOREFRONT RECEPTOR DETAILS

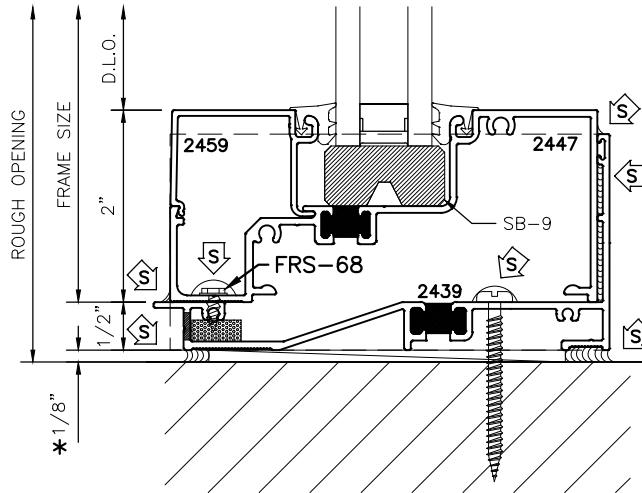
* MINIMUM RECOMMENDED FOR THERMAL ISOLATION. INCREASE AS REQUIRED TO COMPLY WITH SEALANT MANUFACTURERS' INSTRUCTIONS



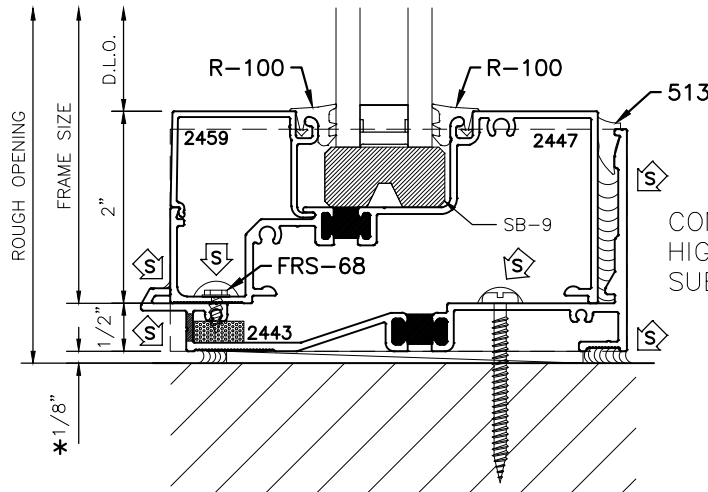


2450CG 4 1/2" CENTER GLAZED THERMALLY BROKEN STOREFRONT SUB-SILL DETAILS

*MINIMUM RECOMMENDED FOR THERMAL ISOLATION. INCREASE AS REQUIRED TO COMPLY WITH SEALANT MANUFACTURERS' INSTRUCTIONS



CONCEALED FASTENER.



CONCEALED FASTENER. HIGH PERFORMANCE SUB-SILL



MANKO

4 1/2" CENTER GLAZED THERMALLY BROKEN STOREFRONT TRUE DIVIDED LITE ASSEMBLY (TDL) DETAILS

* MINIMUM RECOMMENDED FOR THERMAL ISOLATION.
INCREASE AS REQUIRED TO COMPLY WITH SEALANT
MANUFACTURERS' INSTRUCTIONS

