

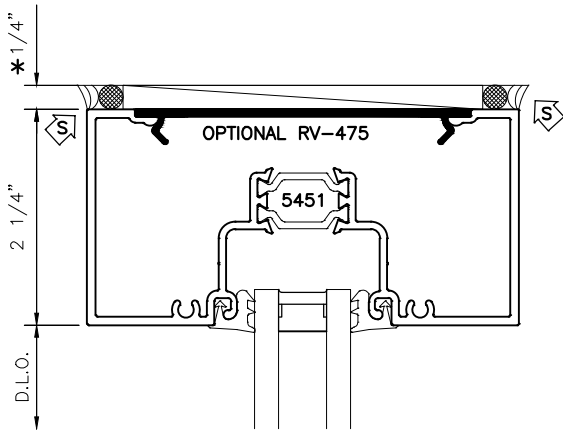
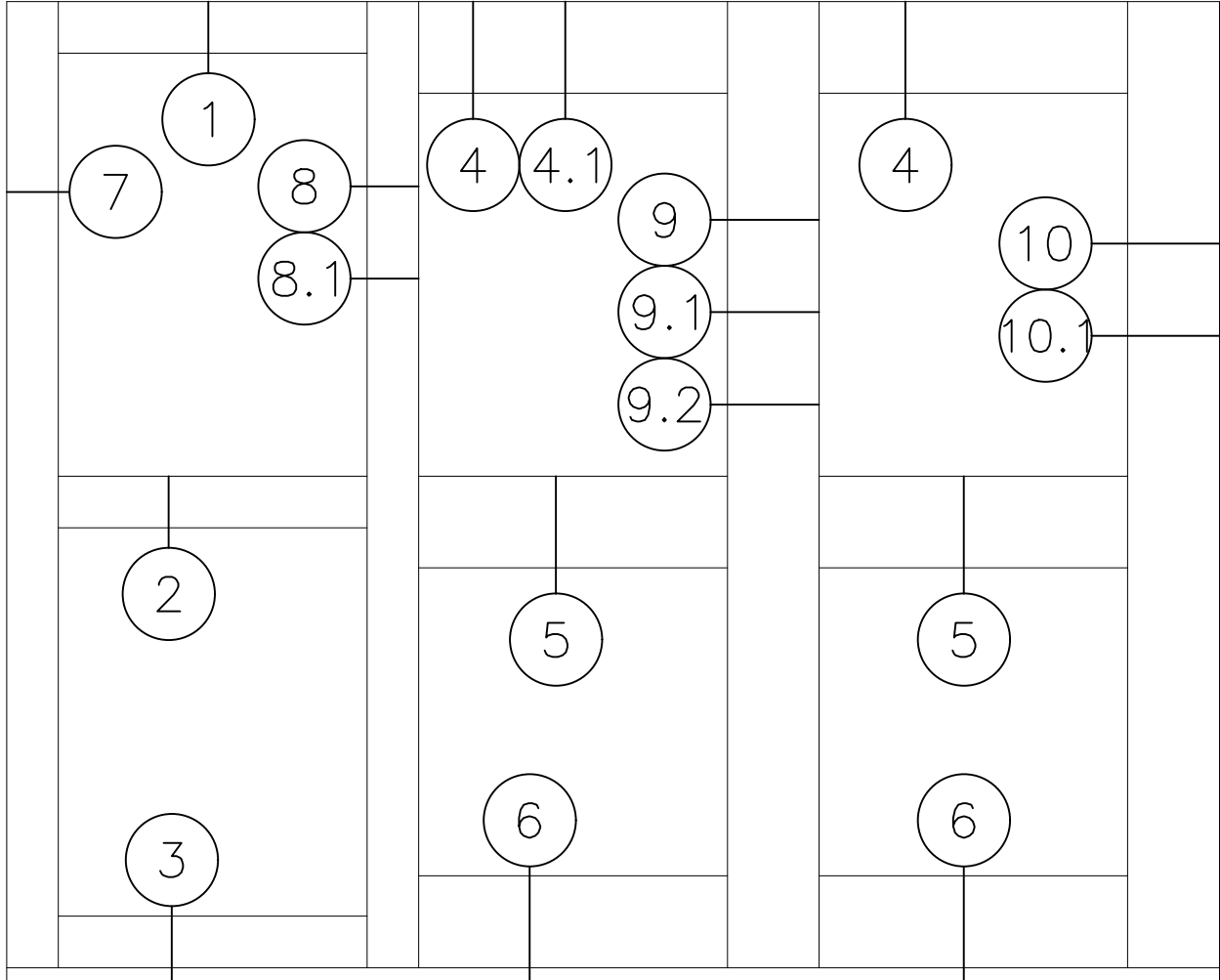


MANKO

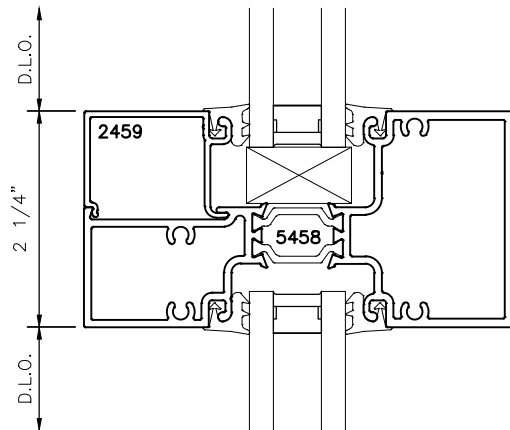
5450i

**2 1/4" X 4 1/2" CENTER GLAZED
THERMALLY BROKEN STOREFRONT
STANDARD / OPTIONAL DETAILS**

* MINIMUM RECOMMENDED FOR THERMAL ISOLATION.
INCREASE AS REQUIRED TO COMPLY WITH SEALANT
MANUFACTURERS' INSTRUCTIONS



1



2

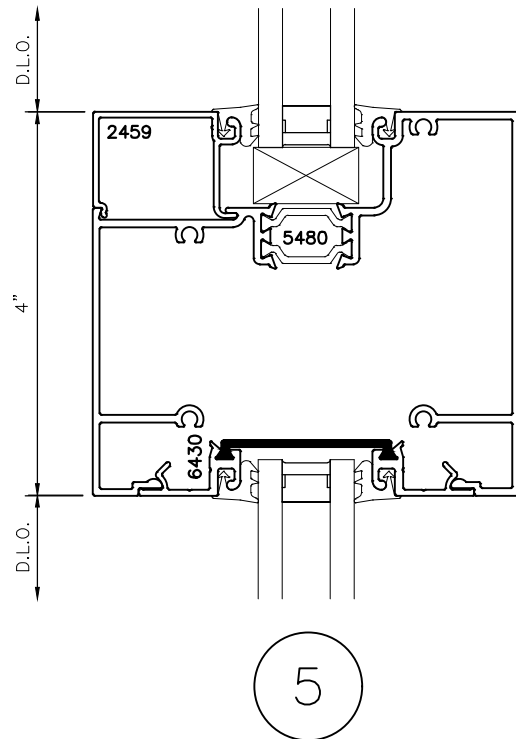
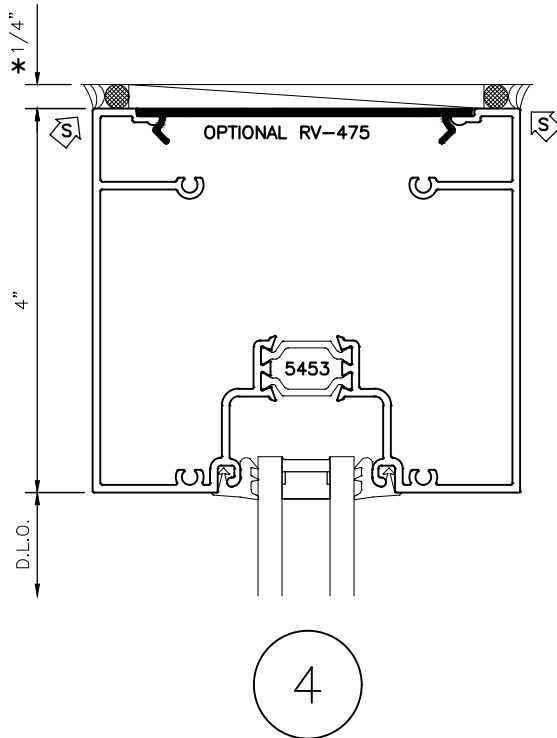
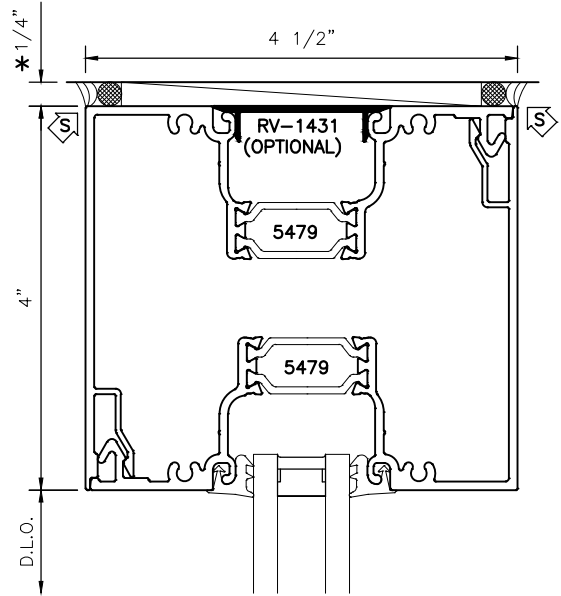
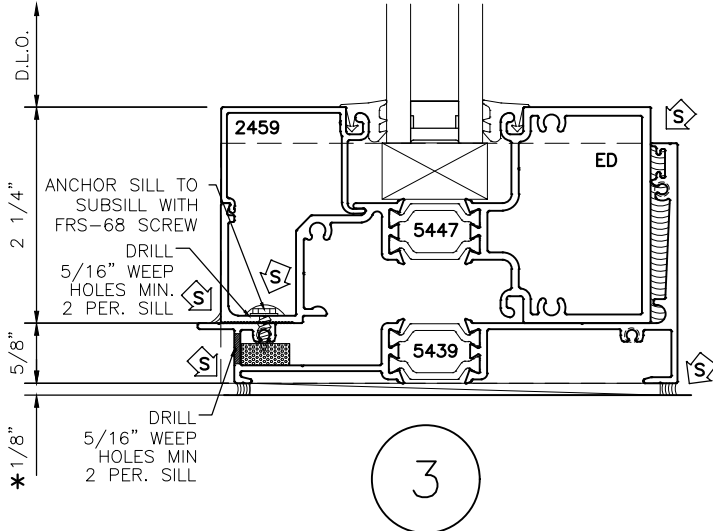


MANKO

5450i

**2 1/4" X 4 1/2" CENTER GLAZED
THERMALLY BROKEN STOREFRONT
STANDARD / OPTIONAL DETAILS**

* MINIMUM RECOMMENDED FOR THERMAL ISOLATION.
INCREASE AS REQUIRED TO COMPLY WITH SEALANT
MANUFACTURERS' INSTRUCTIONS



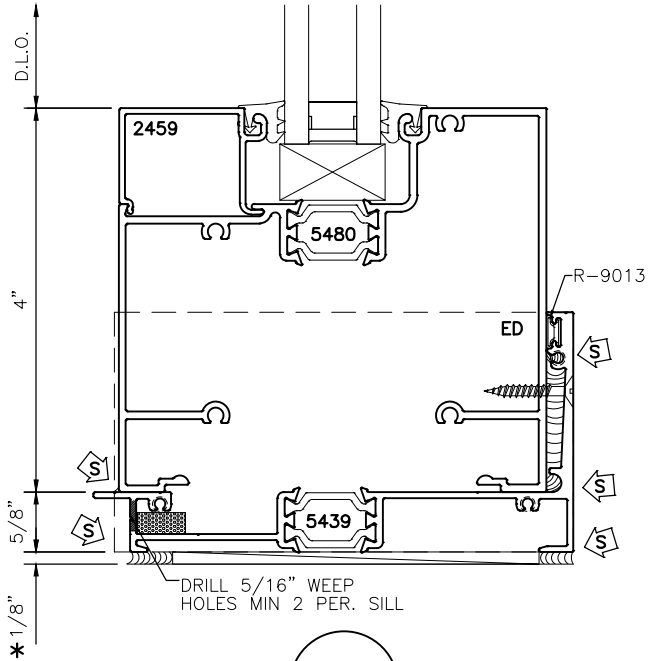


MANKO

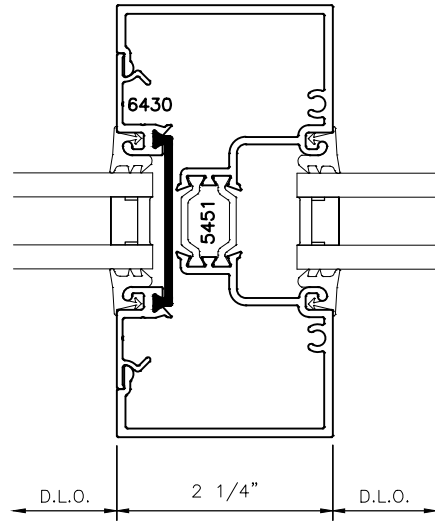
5450i

**2 1/4" X 4 1/2" CENTER GLAZED
THERMALLY BROKEN STOREFRONT
STANDARD/OPTIONAL DETAILS**

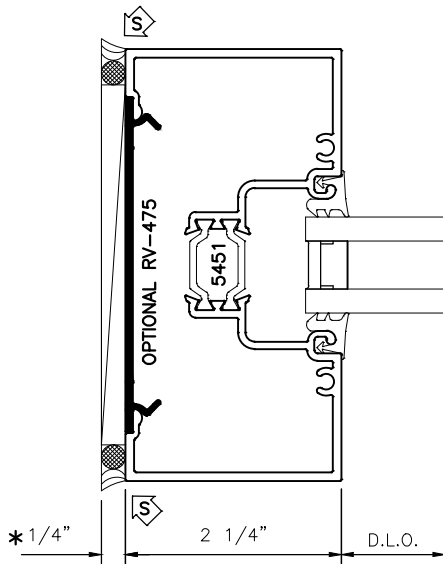
* MINIMUM RECOMMENDED FOR THERMAL ISOLATION.
INCREASE AS REQUIRED TO COMPLY WITH SEALANT
MANUFACTURERS' INSTRUCTIONS



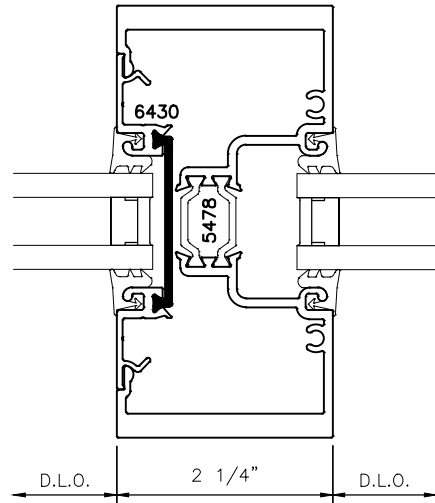
6



8



7



OPT.
8.1

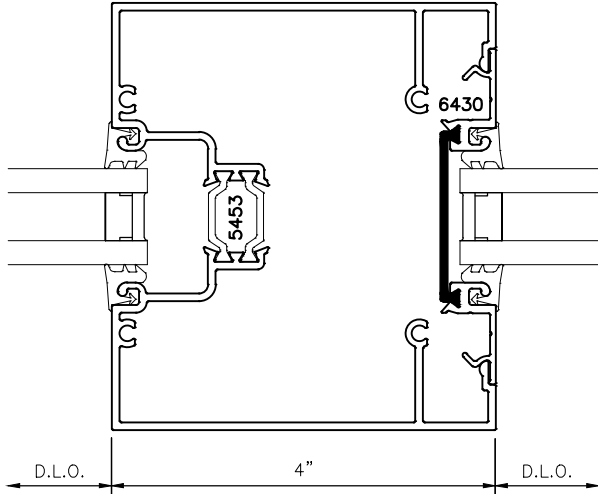


MANKO

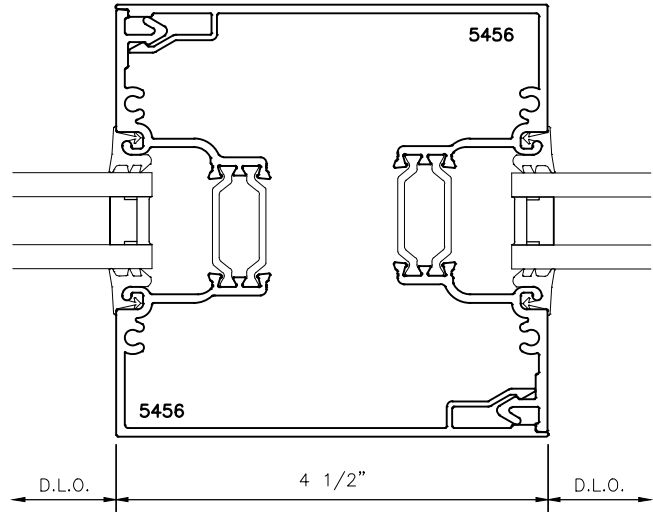
5450i

**2 1/4" X 4 1/2" CENTER GLAZED
THERMALLY BROKEN STOREFRONT
STANDARD/OPTIONAL DETAILS**

* MINIMUM RECOMMENDED FOR THERMAL ISOLATION.
INCREASE AS REQUIRED TO COMPLY WITH SEALANT
MANUFACTURERS' INSTRUCTIONS



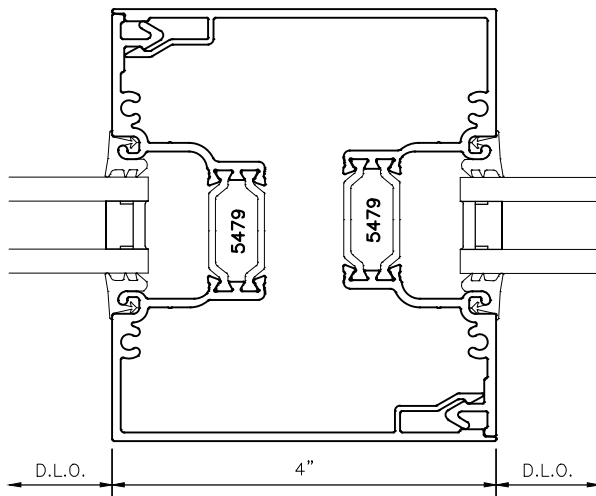
9



OPT.

9.2

4 1/2" SIGHT LINE IN LIEU OF 4" SIGHT LINE



OPT.

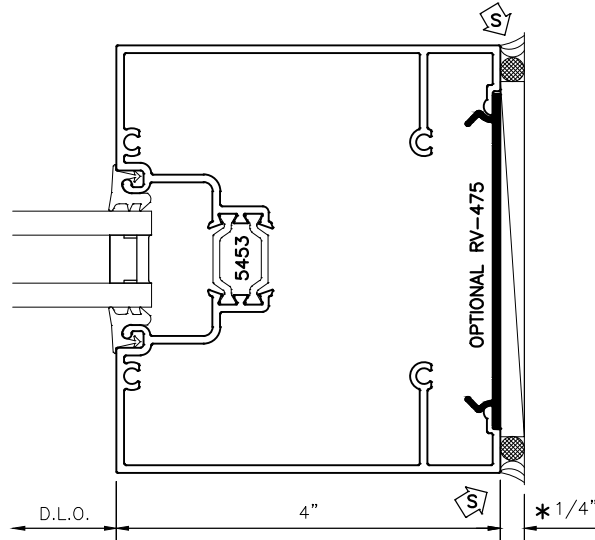
9.1



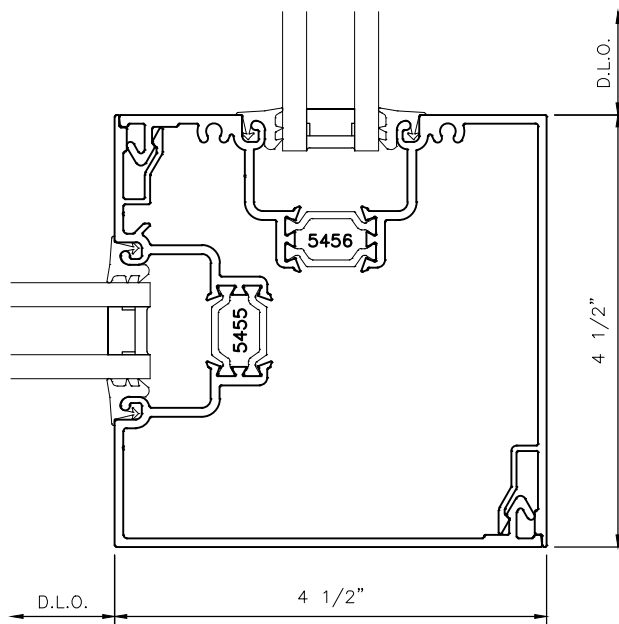
5450i

2 1/4" X 4 1/2" CENTER GLAZED THERMALLY BROKEN STOREFRONT STANDARD/OPTIONAL DETAILS

* MINIMUM RECOMMENDED FOR THERMAL ISOLATION.
INCREASE AS REQUIRED TO COMPLY WITH SEALANT
MANUFACTURERS' INSTRUCTIONS



10



OPT.

10.1

4 1/2" SIGHT LINE IN
LIEU OF 4" SIGHT LINE