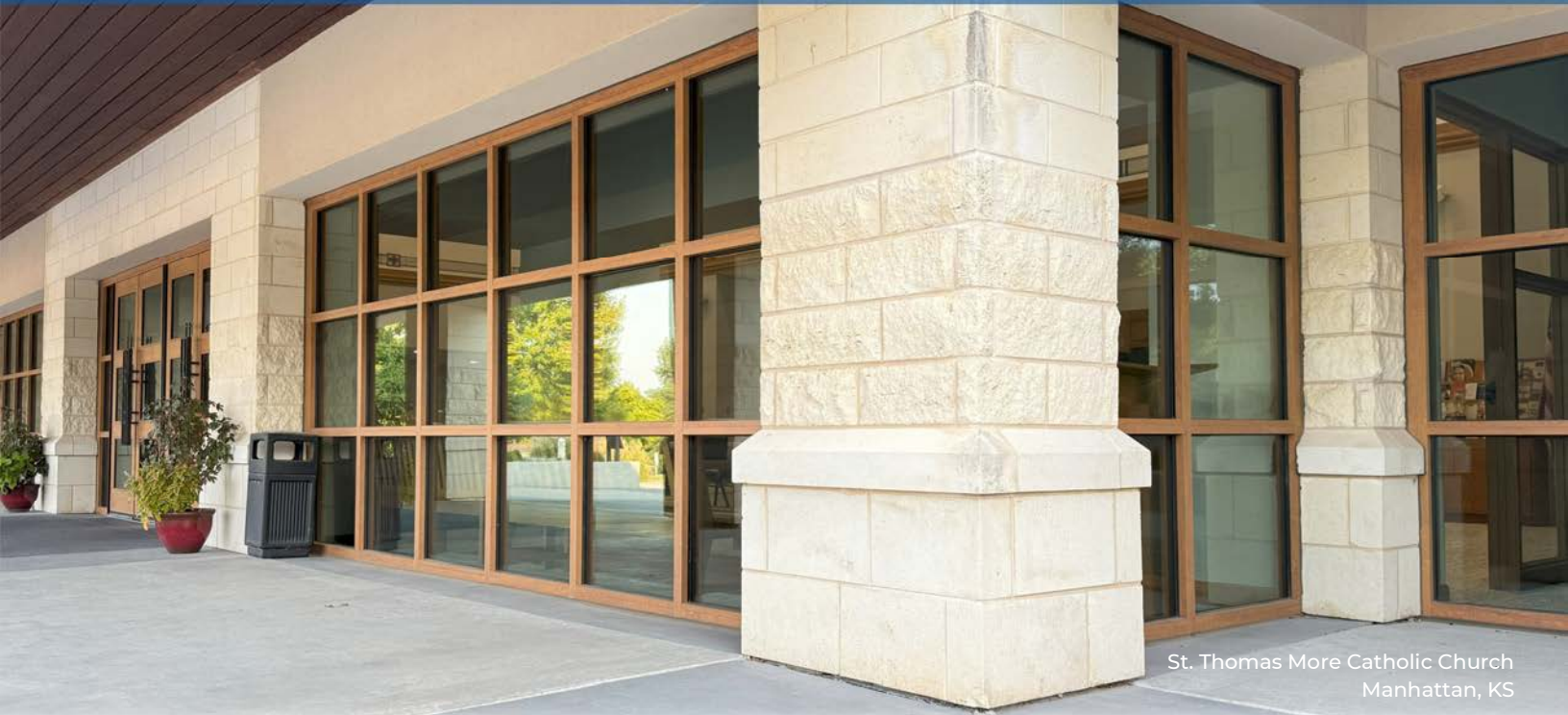


# 5450i Series

## Storefront



St. Thomas More Catholic Church  
Manhattan, KS



Developed to be thermally efficient and customizable, the **5450i** storefront series has a 2 1/4" profile x 4 1/2" depth. In lieu of the traditional two-part pour & debridged thermal break, this storefront system utilizes a crimped-in-place polyamide thermal strut. Using two separate aluminum extrusions crimped-in-place by a thermal strut provides the ability to have a two-tone finish if desired.

### 5450i Product Features

- 2 1/4" Face Dimension, 4 1/2" Frame Depth
- Center Glazing Plane
- Polyamide Strut Thermal Break
- Screw Spline Construction
- 3/16" - 1 1/8" Glazing Cavity
- Integral or Dual Glazed Blind Options
- Window Vent Options
- Anodized and AAMA 2605 Paint Finishes
- Dual Finish Available

### Storefront at a Glance

Series	Glazing Plane	Face Profile	Frame Depth	Thermal Break	Thermal Performance
450 - 1	Center	1 3/4"	4 1/2"	---	
450 - 2	Center	2"	4 1/2"	---	
450 - 3	Center	2"	4 1/2"	---	
2450	Center	2"	4 1/2"	P&D	●
2450FS	Front	2"	4 1/2"	P&D	●
2450xpt	Center	2"	4 1/2"	Dual P&D	●●
2600xpt	Offset	2"	6"	Dual P&D	●●
<b>5450i</b>	<b>Center</b>	<b>2 1/4"</b>	<b>4 1/2"</b>	<b>Strut</b>	<b>●●</b>

St. Thomas More Catholic Church  
Manhattan, KS



Visit [www.mankowindowsystems.com](http://www.mankowindowsystems.com)  
Or scan the QR code for more information on  
Manko's 5450i Storefront Series