



MANKO

WINDOW SYSTEMS INC.

www.mankowindows.com

250

Among Manko Window Systems' curtain wall portfolio is the 250 system. This system has been a staple in our product line for over 20 years. With its 2 1/2" face profile and backmember depths ranging from 1/4" - 8", this two sided or fully captured system can be used in a variety of different applications. The 250 system is well suited for low to mid-rise projects, punched openings, and with entrance systems. Optional corner mullions, expansion mullions, and various sized intermediates allow this system to not only integrate well with the building design, but achieve the desired aesthetics'. The 250 system is compliant with AAMA air, water, and structural testing and has been NFRC certified. When your project calls for a quality, yet economical, curtain wall system, look no further, Manko's 250 can meet the requirements.



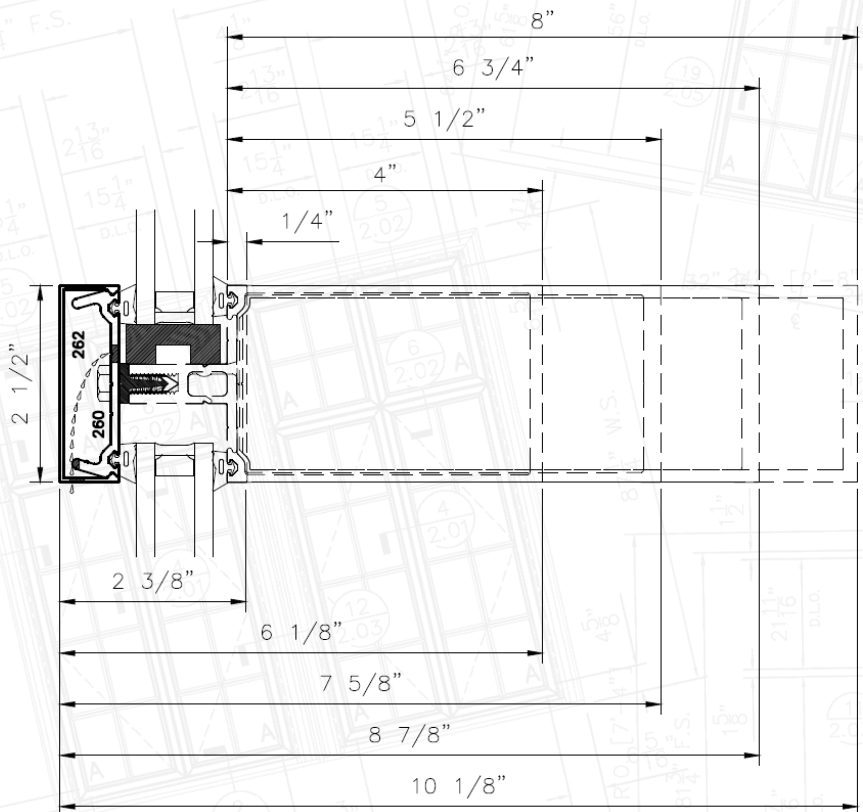
Features

- ⇒ Multiple face cap & back member depths
- ⇒ .125 (3mm) wall thickness
- ⇒ Subframe accommodates storefront doors
Compatible with Manko's thermal doors
- ⇒ 3/16" - 1 1/8" glazing cavity
- ⇒ Take-out & hinged sash venetian blinds
Integral venetian & pleated blind options
- ⇒ Sunshade and light shelf options
- ⇒ Window vent options, including Manko's 1100 series zero sightline window
- ⇒ Full range of anodized & AAMA 2605 painted finishes with dual finish capability

Certified Compliant

- ASTM E 283 – Air
- ASTM E 331 – Water
- ASTM E 330 – Structural

Glass Type	System Performance Values			
	Air U-Value	Argon U-Value	SHGC	CR
Clear SN 68 #2 / Clear	0.47	0.43	0.35	51
Clear SNX 62/27 #2 / Clear	0.46	0.42	0.26	51
Clear SB 60 #2 / Clear	0.47	0.43	0.36	51
Clear SB 70XL #2 / Clear	0.46	0.42	0.26	51



250

250 RETROFIT

Manko's new retrofit options for the 250 system provides buildings with existing curtain wall various thermal enhancing options. The first option is simply replacing the pressure plate and face cap of an existing 250 curtain wall system with Manko's thermally improved polyamide pressure plate. This fabrication friendly option will greatly improve u-values over the existing system. The second option (shown to the right) is adding Manko's extension piece (87084) to the existing 250 curtain wall nose to provide a cavity for triple pane glass. Couple this option with the aforementioned polyamide pressure plate and you can now create an extremely thermally efficient system. Thermal modeling is currently in progress for both options.

