

MANKO

WINDOW SYSTEMS INC.
www.mankowindows.com

3100i

HISTORICAL – FIXED ■ CASEMENT ■ AWNING

Manko's 3100i was specifically designed for the historical replication of steel sash windows. Care was taken to keep sightlines in line with typical National Park Service historical preservation profiles. The 3100i uses a 24mm polyamide crimped in place structural thermal barrier in lieu of the traditional two-part poured and debridged system. This allows for superior thermal performance while retaining the economy of its predecessor. The 3100i series is tested to AAMA Architectural Class (AW) specifications, and carries NFRC 100, 200, and 500 certifications. The frame and operating sash depths are both 3 1/4". Main frame construction is mortise and tenon joinery with dual integral screw races. Operable sashes are mechanically joined and angle reinforced with mitered corner construction. Not only can the 3100i series meet historical design standards, but this series is aesthetically pleasing on any replacement or new construction window project.

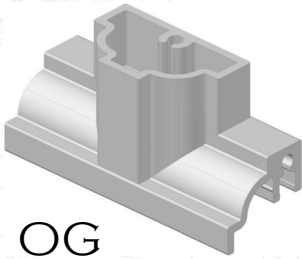


Features:

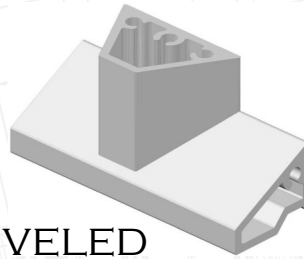
- ⇒ 3 1/4" overall frame depth, with nail fin option
- ⇒ 1" to 1 1/2" glazing options
- ⇒ Preglazed at factory for added quality control
- ⇒ Exterior beveled grids available (beveled, cove, OG)
- ⇒ Interior surface applied & between glass muntins available
- ⇒ Hermetically sealed blinds available
- ⇒ Panning systems & interior snap trims available
- ⇒ Receptor systems available w/optional starter sill with extensions
- ⇒ Custom profiles & configurations available
- ⇒ Full range of anodized & painted finishes dual finish capability



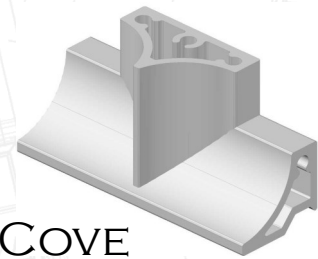
3100i GRID OPTIONS



OG



BEVELED



COVE

AAMA Structural Performance

Type	AAMA Performance Rating	Air Infiltration @ 6.24 psf	Water	Design Pressure	Structural Overload Pressure
Fixed	AW-PG100-F	≤ .1 cfm/ft ²	12.0 psf	100 psf	150 psf
Projected	AW-PG80-AP	≤ .1 cfm/ft ²	12.0 psf	80 psf	120 psf
Casement	AW-PG80-AP	≤ .1 cfm/ft ²	12.0 psf	80 psf	120 psf

NFRC Thermal Performance

COG U-Value	U-Value (NFRC 100)		
	Fixed	Projected	Casement
0.44	0.46	0.55	0.54
0.40	0.43	0.52	0.51
0.36	0.39	0.49	0.49
0.32	0.36	0.46	0.46
0.28	0.32	0.44	0.43
0.24	0.29	0.41	0.41
0.20	0.25	0.38	0.38

All values shown are calculated with Manko standard TriSeal insulated units. Verify performance numbers with test

Sizing Capabilities (Frame Size)

Type	Width		Height		Max FT ²
	Min	Max	Min	Max	
Fixed	12"	100"	12"	100"	≤ 36
Project out w/ cam handle	15"	60"	20"	41"	≤ 16
Project out w/ cam handle & jamb locks	15"	60"	20"	60"	≤ 20
Casement w/ single cam handle	20"	36"	16"	41"	≤ 10
Casement w/ dual cam handle	20"	36"	16"	60"	≤ 15

Glazing Infill Options

Glazing	1"	1 1/8"	1 1/2"
Dual Pane	S	O	
Triple Pane			S
Insulated	S		O
Blinded Unit		S*	

*Hermetically sealed aluminum blinds are available, but will limit glass options and between glass muntins

Hardware Options

Type	4 Bar Hinge w/Friction Shoe	Butt Hinges	Auxillary Friction Device	Limit Device	Cam Handle	Pole Ring Cam Handle	Access Control Custodial Lock	Lift Lock
Projected	S		O	O	*S	O	O	*O
Casement	S	O	O	O	S			O

S = Standard Hardware

O = Optional Hardware

*Lift locks are standard whenever vents exceed 42" tall when using cam handles