

MANKO

WINDOW SYSTEMS INC.

250 / 250x

The modular and versatile 250 Curtain Wall system is Manko Window Systems' flagship series that has been a staple in our product line for over 25 years. It has a standard 2 1/2" face profile with backmember depths ranging from 1/4" to 8". The 250 series offers traditional curtain wall thermal performance by utilizing our standard aluminum pressure plate, gasket isolated from the backmember. However, if increased thermal performance is needed, simply choose our high performance thermal pressure plate made from Rovex®. This pressure plate is a revolutionary fiber reinforced polymer, combining the strength of aluminum with the thermal performance of polyamide. The modular nature of this system gives you the options needed to integrate with any building design, while achieving the desired aesthetics' and system performance. When your project calls for a quality curtain wall system, the 250 series' versatility can meet the requirements.

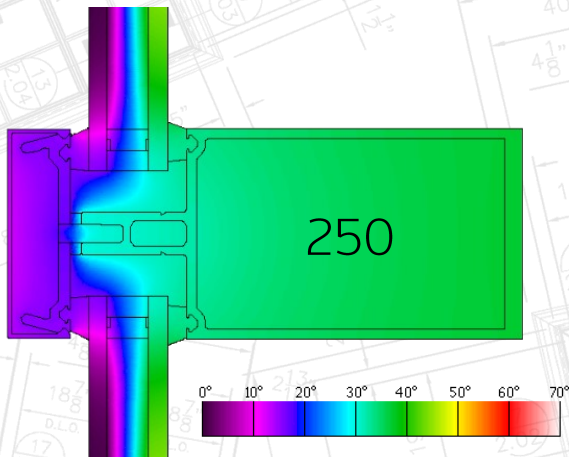


Features

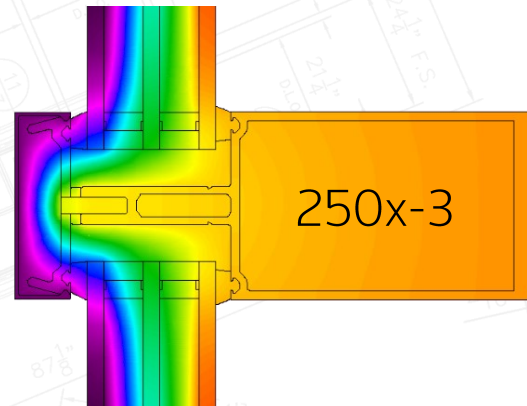
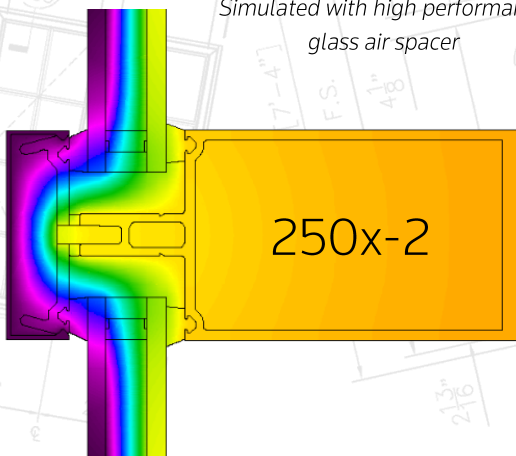
- ⇒ Standard glazing – 1", 1 7/16", & 1 3/4"
- ⇒ Can be utilized in fully captured systems or two-sided SSG
- ⇒ Subframe accommodates all Manko storefront doors
- ⇒ Full range of anodized & painted finishes; dual finish capability

Options

- ⇒ Vent windows, including 1100 series zero sightline
- ⇒ Extended face caps, corner mullions, expansion mullions, and various sized intermediates
- ⇒ Traditional outrigger style sunshades in several sizes and design aesthetics
- ⇒ Single fin sunshades – either horizontal or vertical orientation – available in four different sizes



Simulated with high performance glass air spacer



250 w/Aluminum Pressure Plate - Dual Pane

Glass Type	System Performance Values			
	Air U-Value	Argon U-Value	SHGC	CR
Clear SN 68 #2 / Clear	0.47	0.43	0.35	51
Clear SNX 62/27 #2 / Clear	0.46	0.43	0.25	52
Clear SB 60 #2 / Clear	0.46	0.43	0.36	51
Clear SB 70XL #2 / Clear	0.46	0.43	0.26	52
Clear SN 68 #2 / IS-20 #4	0.42	0.39	0.34	45

250 w/Rovex® Pressure Plate - Dual Pane

Glass Type	System Performance Values			
	Air U-Value	Argon U-Value	SHGC	CR
Clear SN 68 #2 / Clear	0.37	0.34	0.35	59
Clear SNX 62/27 #2 / Clear	0.36	0.33	0.25	59
Clear SB 60 #2 / Clear	0.37	0.34	0.37	59
Clear SB 70XL #2 / Clear	0.36	0.33	0.26	59
Clear SN 68 #2 / IS-20 #4	0.32	0.30	0.34	50

250 w/Rovex® Pressure Plate - Triple Pane

Glass Type	System Performance Values			
	Air U-Value	Argon U-Value	SHGC	CR
Clear SN 68 #2 / Clear / Clear	0.32	0.30	0.32	67
Clear / Clear SN 68 #3 / Clear SN 68 #5	0.28	0.25	0.34	69
Clear SB 60 #2 / Clear / Clear	0.32	0.29	0.33	67
Clear / Clear SB 60 #3 / Clear SB 60 #5	0.27	0.24	0.35	69

All system values calculated per standard NFRC 100, 200, and 500 conditions.

Values subject to change at any time without notice.

The Rovex® Difference

- ⇒ Simply opting for Manko's Rovex® pressure plate can significantly enhance your system's thermal performance
- ⇒ Rovex® can be utilized in retrofit situations, improving thermal performance using existing installed backmembers
- ⇒ Rovex® can be processed with most traditional fabrication methods; see Manko's handling & fabrication information for additional recommendations

