



1100 SERIES

2^{11/16}" ARCHITECTURAL GRADE

Project Out / Casement Window System
(AP-AW80, C-AW80)

The 1100 Series project out vent was designed to be a minimal sightline for the installation into storefront and curtain wall framing. This window can be used for both new construction and retrofit into existing framing systems. Once installed, the 1100 series gives the appearance of a glazed insulated glass unit and carries AAMA Architectural Window Class (AW) Certification. Principal wall members are .094" thick at structural areas. Main frame construction is mortise and tenon joinery with dual integral screw races. Operating sashes use mechanically joined, angle reinforced, mitered corner construction. This product and its accessories employ an integral structural thermal barrier that maximizes thermal performance.

FEATURES

- Structurally tested per ANSI/AAMA 101
- Life cycle tested per AAMA 910
- Forced Entry Resistance Level 10
- Minimal vent sightline
- Integral structural thermal barrier
- Dual EPDM weathering at operating sash
- Angle reinforced vent corner joinery
- Pre-glazed at factory
- 1" glazing infills
- Equal or unequal leg frames
- Full range of anodized finishes
- Full range of architectural painted finishes
- Spandrel and composite glazing panels
- Extruded screen frames
- Aluminum screen wire
- Interior glass muntins
- Hermetically sealed integral blinds
- Custom configurations with standard details

1100

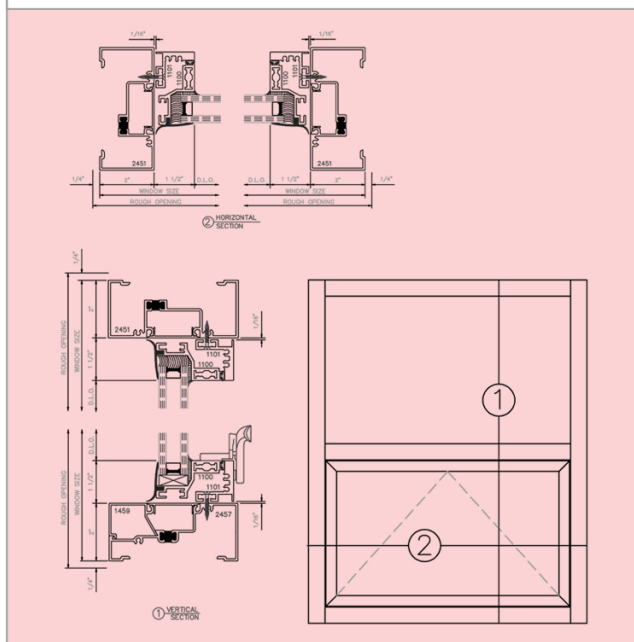
800 Hayes Drive
Manhattan, KS 66502
Phone: (800) 642.1488
Fax: (800) 576.2656



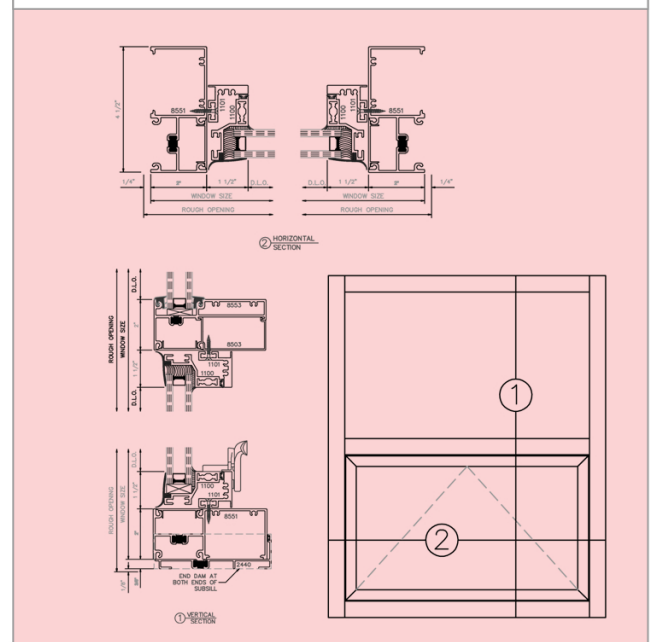
11000 East 51st Ave., Suite B
Denver, CO 80239
Phone: (888) 642.1488
Fax: (303) 375.0669

Please visit:
www.mankowindows.com
for more information

Project Out / Center Glazed Storefront

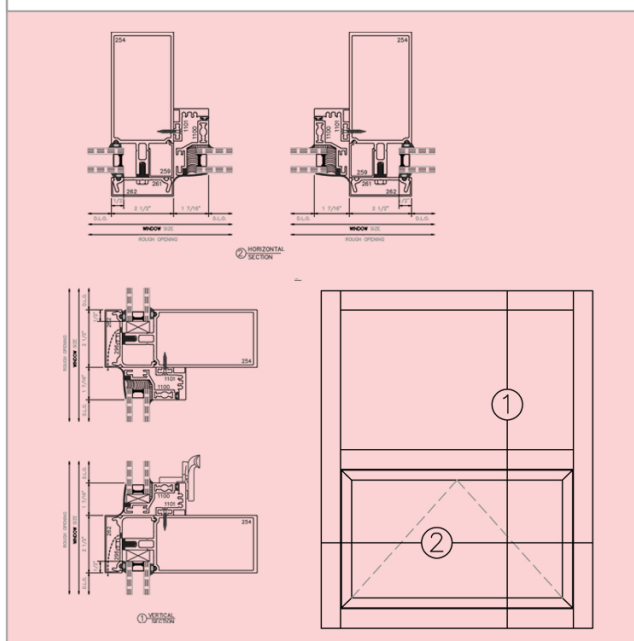


Project Out / Curtain Wall

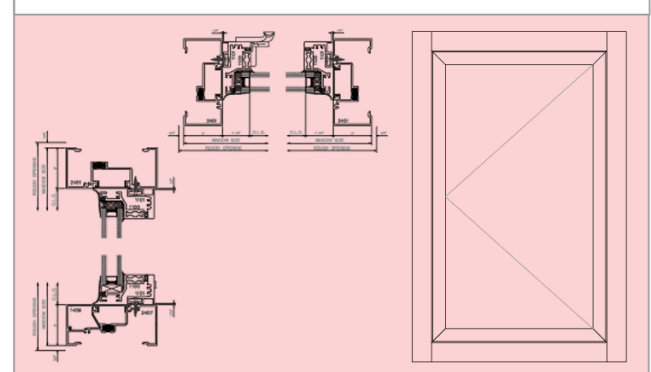


Please visit: www.mankowindows.com for DWG and PDF detail cuts

Project Out / Front Set Storefront



Casement / Center Glazed Storefront



AAMA PERFORMANCE RESULTS

	AAMA/ NWWDA 101/ I.S.2-97 Rating	Air Infiltration	Minimum Water Resistance	Uniform Structural Load	Forced Entry Resistance
Project Out	AP-AW80	.1 CFM	12 PSF	120 PSF	Level 10

▲ Minimum Gateway performance values listed. All testing met or exceeded listed values. Consult factory for actual test results obtained and certified test reports.

1100 SERIES HARDWARE OPTIONS

	4 Bar Hinge	Friction Adjuster	Key Release Limit Arm	Dual Arm Roto Operator	Cam Handle	Pole Ring Cam	Access Controlled Lock	Lift Lock	Glazing Options
Project Out	S	O	O	NA	S	O	O	NA	1"

* = size limitations apply

S = Standard

O = Optional

NA = Not Available

▲ Locking cam handles, access controlled locks, and keepers are of cast white bronze with US26D finish. Four-bar hinges are fabricated of stainless steel, meeting AAMA 904.1 requirements.